

CARACTERÍSTICAS TÉCNICAS:



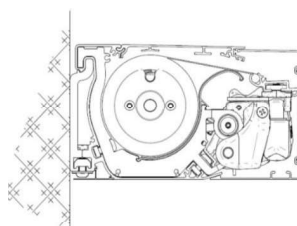
Barra de enrollado Ø78



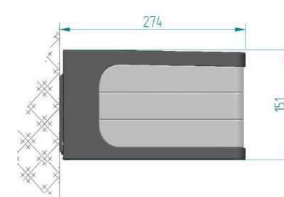
Perfiles y tapas laterales



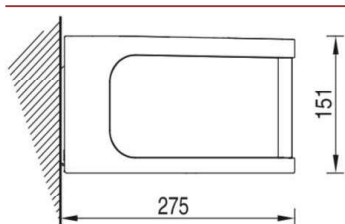
Brazos preparados para Leds



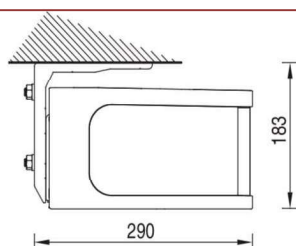
Medidas sistema cerrado



TIPOS DE MONTAJE:

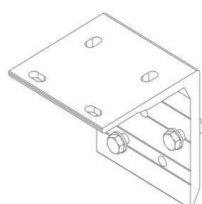


Instalación a pared



Instalación a techo

SUPLEMENTOS:



Escuadra a techo 150€

